



Qubo

A **Hero**  
Group Venture

# The QBOOK

Smart Door Lock  
ESSENTIAL



VISIT OUR YOUTUBE PAGE AND WATCH  
THE HOW-TO VIDEOS  
FOR MORE INFORMATION.



Scan QR code





Meet  
**QUBO**  
Smart Door Lock  
ESSENTIAL

Discover Keyless Smart Living with Qubo Smart Door Lock ESSENTIAL.

No keys, no hassle, no fuss. Qubo smart lock keeps the right ones in and wrong ones out of your home.

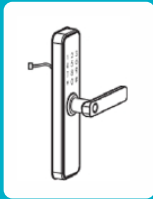
Qubo Smart Lock ensures layers of security and key-less convenience with its 5-Way Secure access methods (Fingerprint, Pincode, Access Card, Mobile App & Mechanical Key). Conveniently unlock with Voice Guidance & Get Low battery alerts.

Enjoy the convenience of smart security today.

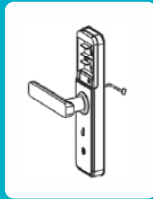
# Contents

1. What's in the box?
2. Let's take a closer look
3. What you will need?
4. Lets Get Started - Installation Steps
5. Safety Guidelines
6. Certification & Disclaimers

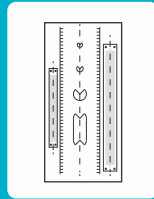
# WHAT'S IN THE BOX?



Front Panel



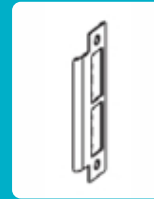
Back Panel  
with Battery  
Cover



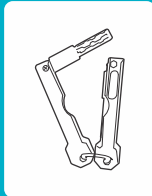
Drilling Template



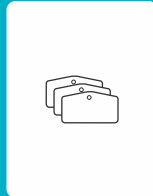
Mortise



Strike Plate



2 Mechanical Keys



Access Cards



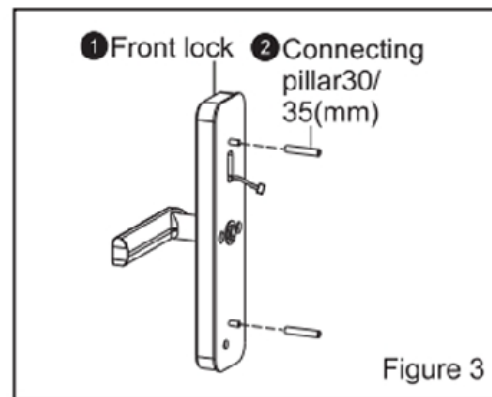
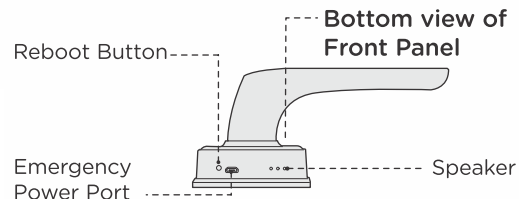
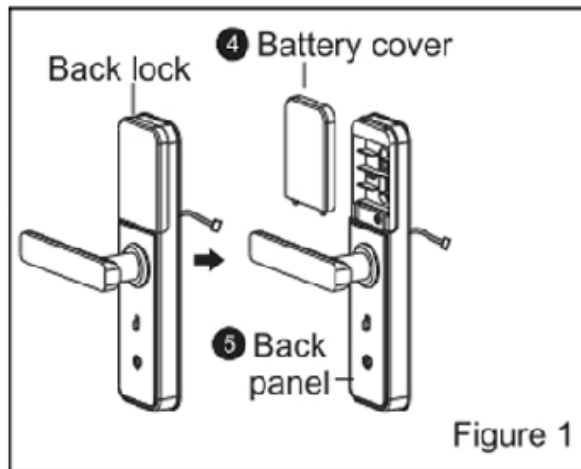
Screw Kit



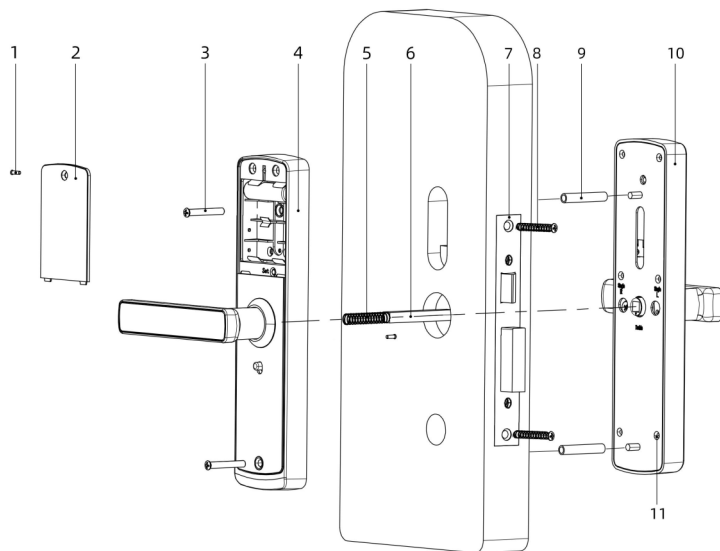
Warranty Card

**Disclaimer** This package list is for reference only, and all contents are subject to the actual products.

# Let's take a closer LOOK



# EXPLODED VIEW OF YOUR DEVICE



1. Fixed Screw
2. Mechanical Key Cover
3. Mounting Screw (2Pcs)
4. Back Panel
5. Pressure Spring
6. Square Shaft
7. Mortise
8. Fixed Screw (4 pcs)
9. Connecting Screw Bolt (2 pcs)
10. Front Panel
11. Fixed Screw (4 pcs)

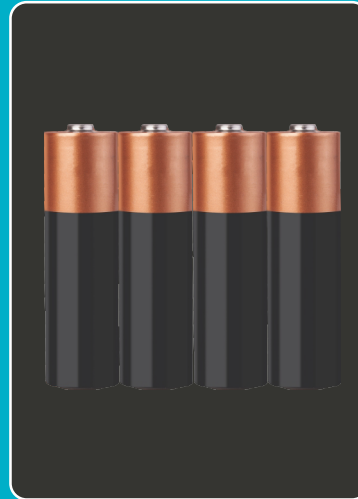
**Disclaimer** Please press the spring at the end of shaft before installing it.

# What else you will **NEED?**

Qubo App on your Smartphone



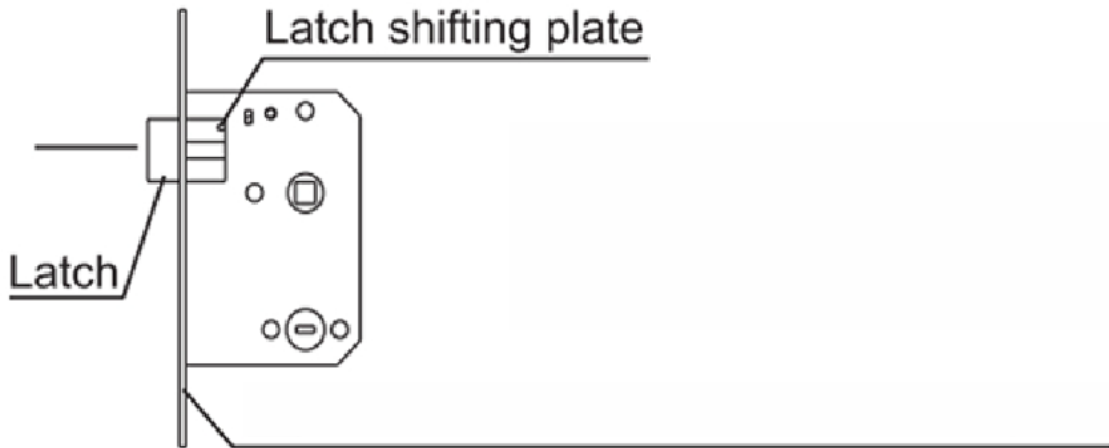
4 AA Alkaline Batteries  
are recommended



# Installation Preparation

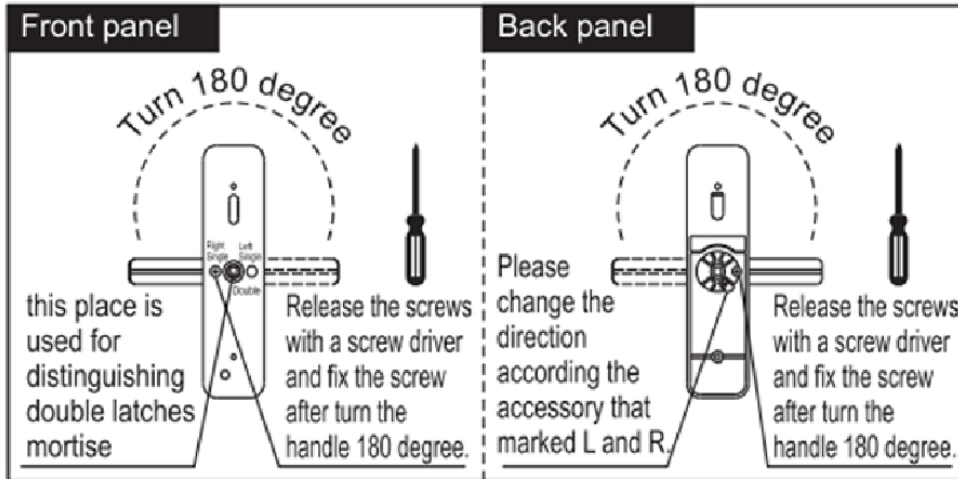
Change latch direction- by default it is on right in-right out

1. Pull the Latch shifting plate to another side
2. Push the latch into the mortise and turn 180 degree



# Change handle direction (Left and Right)

By default, Door lock is for Right - Out, Right-In doors, to Change handle direction of front panel to left in-left out read instructions below:



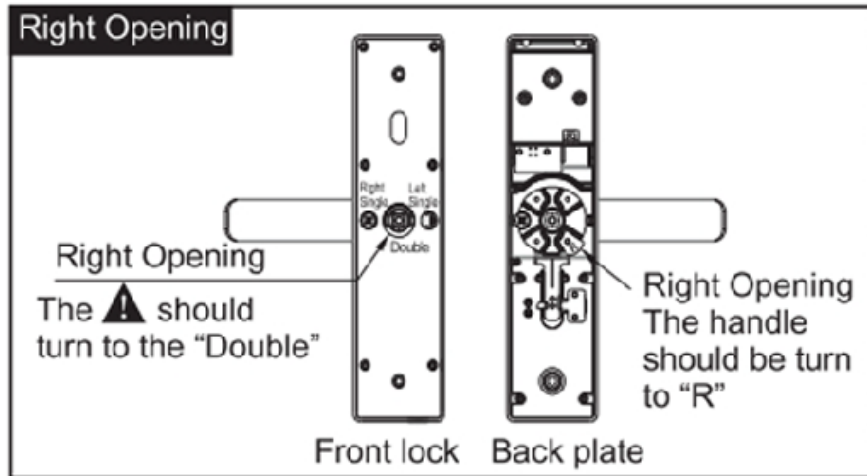
**Step 1:** Take out the Screw from front panel

**Step 2:** Rotate the handle to other direction

**Step 3:** Fasten the screw



# CHANGE HANDLE DIRECTION OF BACK PANEL



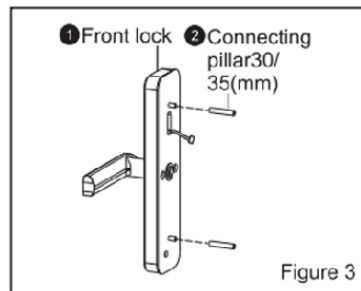
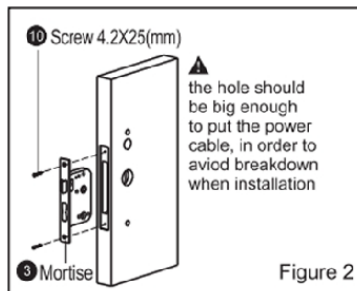
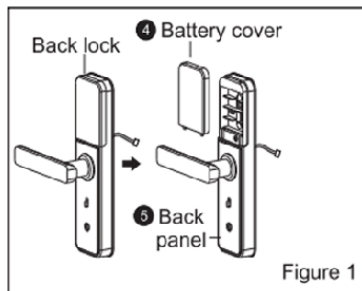
**Step 1:** Take out the Screw

**Step 2:** Rotate the handle to the other end

**Step 3:** Fasten the screw

# Installation

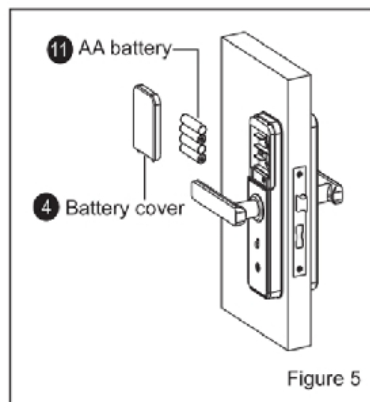
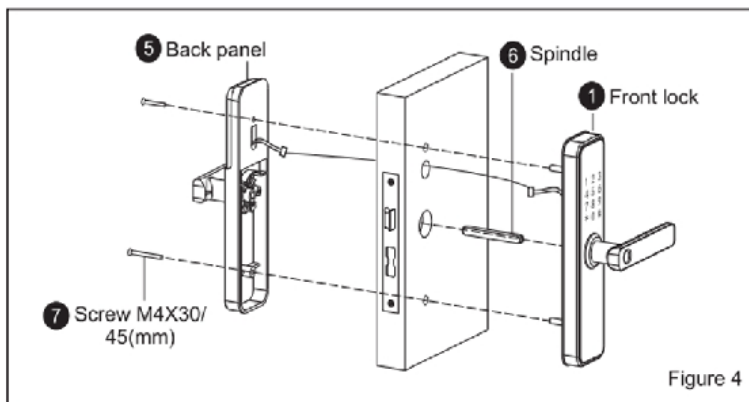
**Step 1:** Position the 'drilling template' (provided in box) on the door and drill holes as indicated



**Step 2:** Install the Mortise as mentioned in the picture and tighten the screws to fix the mortise on the door.

# Installation

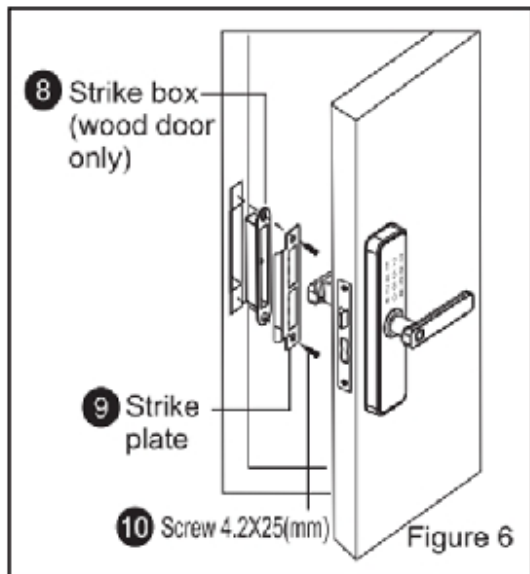
**Step 3:** Fix screw bolt on the front panel, Place Square shaft and pressure spring into the bore.



**Step 4:** Pass the connection cable through the bore. Then align and insert square shaft into mortise holes to make the front panel fit against the door closely.

**Step 5:** Insert the connecting cable through the mortise and front panel into related socket.

**Step 6:** Fasten the back panel to the door using Mounting screws.



**Step 4:** Install the batteries and the battery cover. Then install the strike plate on the door frame to finish the installation. Please check handle and mechanical key if they are working properly.

# MULTIPLE WAYS TO ACCESS YOUR DOOR



Finger Print



Pincode



Qubo Mobile App



Access Card



Mechanical Key

# SETUP ACCESS FOR YOUR SMART DOOR LOCK

## ACCESS SETUP THROUGH QUBO APP

### Step 1:

Download the Qubo App from Google Play or Apple App Store by scanning the QR Code below.



### Step 2:

Create an account on the QUBO App if you don't have account else open Qubo app and follow the instructions to get started. You can also start your device by using below steps:

## ACCESS SETUP MANUALLY

### Step 1: Setting up Admin Code

- o Touch the screen to activate
- o By default, Master PIN is 123456
- o Press \* followed by # wait for audio prompt
- o Press 3 Enter Admin code and press #
- o Follow instructions as guided by Device

**Step 2:** To add user PIN code press 1

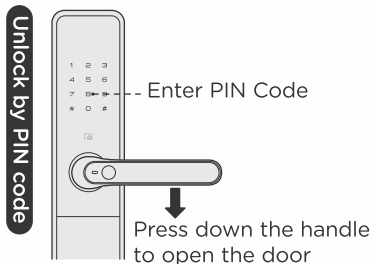
**Step 3:** Enter user PIN code (6-12 digit) and confirm With # key.

To know how to add/delete access options of your QUBO Smart Door lock please scan below the QR Code



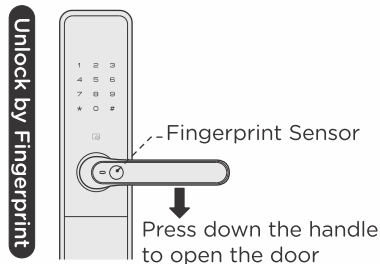
**Note:** Access Setup is recommended through Qubo Mobile App.

# HOW TO UNLOCK FROM OUTDOOR/ FRONT PANEL



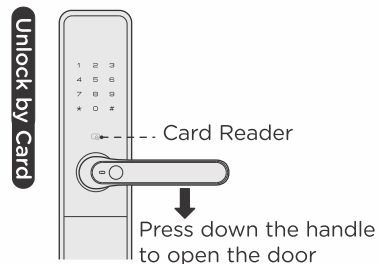
## Outdoor | Front panel

1. Touch keypad by palm from below to up to lighten keypad.
2. Enter the enrolled PIN code with end of [#].  
Voice prompt "Successful".
3. Press down the handle to open the door.



## Outdoor | Front panel

1. Place the enrolled finger properly on the fingerprint sensor area until one beep sound and voice prompt "Successful."
2. Press down the handle to open the door.



## Outdoor | Front panel

1. Place the enrolled access card properly on the card reader area until one beep sound and voice prompt "Successful."
2. Press down the handle to open the door.

## UNLOCK BY MECHANICAL KEY

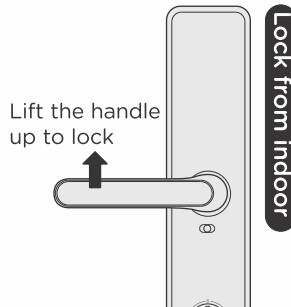
Key hole is at the bottom of the front panel, Insert the key into key hole and rotate it. Then Press the door handle downwards to open the door.

**⚠ Caution:** In case of forgetting PIN code, battery run out or system error, mechanical key is used to open door as backup mode.

## LOCK FROM OUTDOOR/ LOCK FROM INDOOR/ DOUBLE LOCK FROM INDOOR



Outdoor | Front panel

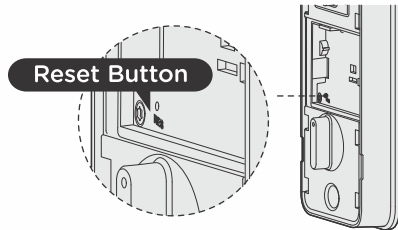


Indoor | Front panel



# OTHER FUNCTIONS

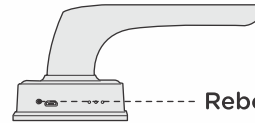
## Restore to factory default settings



### Operation instructions:

1. Open back cover and find the reset button.
2. Press Reset button for 2 seconds, then you will hear a voice prompt from the lock.  
Device is now- Reset
3. After that all user data and settings will be deleted.

### Reboot:

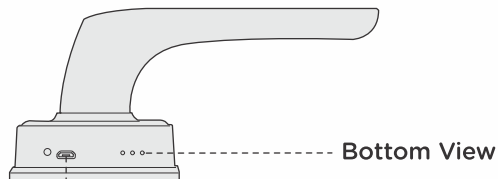


### Reboot Button

Press the reboot button to restart the lock when the system is unresponsive, no user data is deleted.

# EMERGENCY POWER SUPPLY

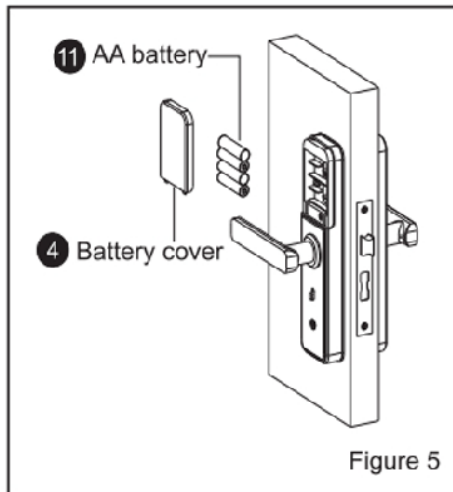
When the battery voltage is too low and cannot be opened from outside, connect a 5V power supply via Micro USB port at the front. Then unlock the door and replace all batteries immediately.



Emergency USB Power Port

**⚠ Caution:** Do not mix old and new batteries together in replacement.

# REPLACE BATTERY



4x1.5V AA Alkaline battery required

**⚠ Caution:** When battery voltage is lower than 4.8V, voice prompts “Low battery, please replace all batteries” at each unlocking. Please replace all batteries immediately, and do not mix old and new batteries together in replacement.

# Safety Guidelines

## Safety instructions:

- Read and understand all instructions before using this smart lock. Damages caused by failure to follow instructions is not covered by the warranty.
- It is recommended to use the enclosures / accessories specified by the company.
- Use only alkaline batteries configured with this product.
- Do not forcibly disassemble this product in order to avoid alarm sound or damage to the product.
- Do not scratch the fingerprint reader with sharp objects, otherwise it may cause permanent damage.
- Do not expose the product to corrosive substances, so as not to damage the outer protective layer.
- Do not hand objects on the handle, so as not to affect the normal use of the door lock.
- When cleaning the product, please wipe it with a soft cloth.
- Do not disassemble the battery while the device is operating.
- Please choose a professional engineer to install the door lock and follow the company's standard installation instruction, and do not install it by yourself.
- After the door lock is installed, please modify the default master PIN code immediately and keep the mechanical key in a safe place. Don't disclosure PIN code to the unknown person.

- When low battery alarm is triggered, please replace all the batteries in time.
- After the Door Lock is installed, please modify the default master PIN code immediately and keep the mechanical key in a safe place. Do not disclose the PIN code to any unknown person.
- When low battery alarm is triggered, please replace all the batteries immediately.

#### Warning:

- Do not place battery closing to fire in case of explosion.
- Do not short-circuit the two poles of the battery lead with metal objects in case of explosion.
- Making sure replacement or maintenance are done by professional person authorized by Qubo .
- Your warranty may invalidate if you used accessories produced by other manufacturer or not recommended by Qubo .

#### Disposal of used battery and lock

- Please understand the local electronic product classification and collection system.
- Please follow the local regulations and do not discard used batteries into ordinary household garbage.
- Proper disposal of used product helps to avoid potential negative impacts on the environment and human health.

# Certification

Declaration for Compliance of Reduction in the use of Hazardous Substances (ROHS) provisions of the E-Waste (Management) Rules, 2016.

We, Hero Electronix Private Limited, being the producer as per E-Waste (Management) Rules, 2016, hereby declare that the device is in compliance with the ROHS provisions of the above said rules.

In compliance with the E-Waste (Management) Rules, 2016, the content of hazardous substances in the device (with the exemption of the applications listed in Schedule II of the E-Waste (Management) Rules, 2016) are as follows:

Lead: not exceeding 0.1% by weight

Cadmium: not exceeding 0.01% by weight

Mercury: not exceeding 0.1% by weight

Hexavalent Chromium: not exceeding 0.1% by weight

Polybrominated Biphenyls: not exceeding 0.1% by weight

Polybrominated Diphenyl Ethers: not exceeding 0.1% by weight

# SUPPORT

## In case you need further help setting up this device:

- Visit the support section on our website and download the detailed user manual.
- Visit our YouTube page and watch the How-To videos.
- Contact our customer care center at 1800-572-5757.

## Disclaimers

- For optimal performance, the device requires a Wifi upload speed of more than 2 Mbps.  
Hero Electronix Private Limited reserves the right to make changes to existing services without prior notice, at its sole discretion.
- Images used are for reference purpose only. Actual product might vary in terms of colour and composition.  
All related logos are trademark of Hero Electronix Pvt. Ltd.



CONNECTED SMART DEVICES FROM



**Hero  
Electronix**

**Hero Electronix Pvt Ltd.**

503, Rectangle - 1, D-4, Saket District Centre, New Delhi - 110017

[www.quboworld.com](http://www.quboworld.com), [helpdesk@quboworld.com](mailto:helpdesk@quboworld.com)

**1800-572-5757**

Follow us on

