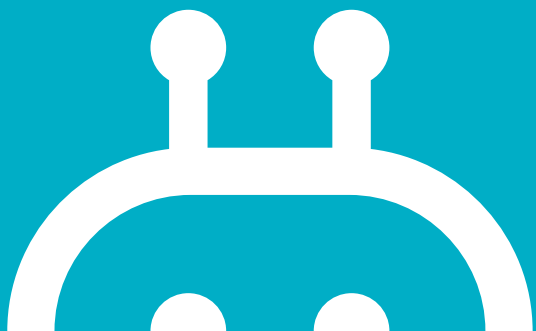




The QBOOK

Outdoor Security Camera





Contents

1. Meet Qubo
2. What's in the box?
3. Let's take a closer look
4. What will you need?
5. Let's get started
6. Choose a location
7. Do's and Don'ts
8. Mount your Outdoor Security Camera
9. More than just an Outdoor Camera
10. Safety Guidelines
11. Support

Meet

QUBO

Outdoor Security Camera

Anxious about social hygiene in the time of the Coronavirus pandemic? Concerned that your car might be stolen or damaged? Worried about the safety of your loved ones?

The Qubo Outdoor Security Camera will help you protect your loved ones, your car and maintain social hygiene, all by using just one device. The artificial intelligence-powered, all-weather Outdoor Security Camera is the solution to all your worries.

Smart AI-powered features such as Face Mask Detection, Secure Car Parking and Person Detection will help keep your surroundings secure, while its weather-resistant and dust-proof IP65 Camera ensures clear vision and uninterrupted functioning. Ensure the well-being of your loved ones with Face Mask Detection. Safeguard your car or your parking spot with Secure Car Parking, making sure the vehicle is parked safely in its spot. Remotely monitor your home to know what's happening anytime. Stay connected from anywhere with 2-Way Talk. Create Smart Routines, Set Modes and stay vigilant even in the dark with Night Vision.

Your World. Connected.

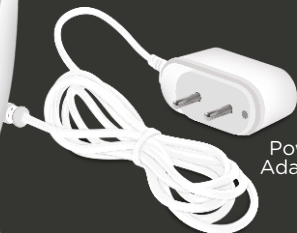


What's in the BOX?

1. Outdoor Security Camera
2. Power Adapter
3. Cable
4. Deco Plate (Attached)
5. Wall Anchors (2 units)
6. Wall Screws (2 units)
7. Deco Plate Screws (2 units)



Outdoor Security
Camera



Power
Adapter

Cable



Wall Screws



Deco Plate Screws



Wall Anchors



Deco Plate



LED states and meaning

Red LED blinking rapidly	Ready for setup
Red LED continuous	Not connected to Wi-Fi
Green LED continuous for 5 seconds	Device is ready
Green LED continuous	2-Way Talk begins

Let's take a closer LOOK

① Multicolour LED

② Camera

③ Mic

④ Movable Hinge Joint

⑤ Stand

⑥ Deco Plate

⑦ Speaker



Reset Button



SD Card Slot

What will you NEED?

Wi-Fi Network

- 2.4 GHz Wi-Fi (802.11 b/g/n) network
- Greater than 2 Mbps network upload speed

iOS

- iOS 11 or higher

Android

- Android 8.1 or higher

Power

- 110V - 240V

SD Card

- Maximum 128 GB

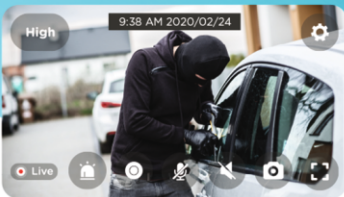


Home
Garage



High

9:38 AM 2020/02/24



Events



Person Detected

9:38am



Person With Mask Detected

8:00am



Person Detected

7:00am



Person Detected

4:59am



Routines



Devices



Modes

Let's get STARTED

Step 1

Plug in your Qubo Outdoor Security Camera: Connect the power cable that comes with the device to a power source via the power adapter.

Step 2

Download the Qubo App from Google Play or Apple App Store by scanning the QR Code below.

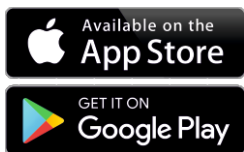


Step 3

Create an account on the Qubo App and follow the instructions to get started.

If you are an existing Qubo user, you can simply go to Add Device on the Qubo App.

Step 1



Step 2

Step 3

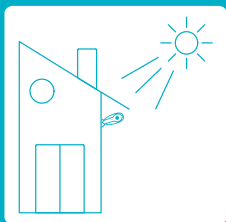


It is highly recommended to set up the camera before mounting it.

Choose a Location

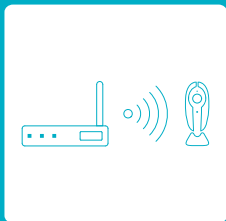
Try to minimize exposure to direct sunlight.

Qubo Outdoor Security Camera is designed to operate between 0°C to 45°C.



Keep it in range of your router.

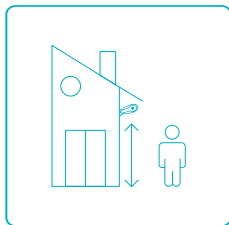
Install the Qubo Outdoor Security Camera in range of your Wi-Fi network.



Do's and Don'ts

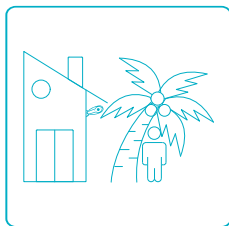
Place it up high.

We find that placing the camera 2-3 metres above the ground, tilted downwards, works best. Check live footage on the Qubo App to make sure you have a clear view.



Consider the surroundings.

Is a pole, plant or porch light blocking the view? It might interfere with the camera's view. If you notice glare, adjust the camera angle.



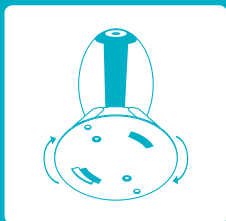
Mount your Outdoor Security Camera

Step 1: Rotate the deco plate clockwise to expose the holes for the wall screws. The screw holes to fix the deco plate will also fall into place.

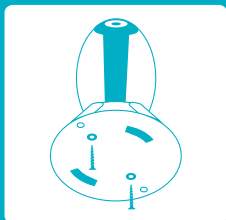
Step 2: Fix the deco plate into the base of the Qubo Outdoor Security Camera using the deco plate screws provided in the box. The deco plate screws can only be screwed into the smaller holes, towards the center of the deco plate.

Step 3: Fix the device on the wall using the wall screws. We recommend marking the spots where you intend to drill the holes. Use wall anchors (included) to hold the screws if you want to mount the device on hard surfaces such as brick or stone.

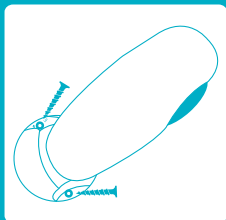
Step 1



Step 2



Step 3



More than just an Outdoor Camera

Face Mask Detection

Get notified when the Qubo Outdoor Security Camera detects someone who is not wearing a face mask.

Secure Car Parking

Qubo Outdoor Security Camera allows you to create a safety zone around your car through the Qubo App. The device will notify you instantly if your vehicle goes out of the designated parking zone.

Disclaimer:

Face Mask Detection works up to 5 meters away from the device. Secure Car Parking works up to 20 meters away from the device. Absence of ambient light could impact the functioning of these features.

These are both beta features. We would love to hear your feedback.



Safety Guidelines

Use responsibly. Read all instructions and safety information before use.

 Failure to follow these safety instructions could result in fire, electric shock, other injury or damage.

- Do not immerse the device in any kind of liquid.
- Do not attempt to dry the device using an external heat source such as a microwave oven or a hair dryer.
- Clean the device with a dry, soft cloth. Do not use abrasive or harsh chemicals.
- Keep the device and all its components out of reach of children and pets.
- Do not expose the device to steam or extreme temperatures. The safe operating temperature for this device is between 0°C and 45°C. Keep the device out of direct sunlight.
- This device does not have an on/off button. Unplug the power adapter to turn off the device.
- Only use the power adapter and cable included with the device. If the power adapter or cable appear to be damaged, stop using it immediately and contact Qubo Customer Care.

- Do not plug multiple devices into the same wall socket.
- Install the device in accordance to the building and city code.
- All Qubo products and services are meant for ages 18 and above.
- This device is meant to be used as a monitoring device for personal use only. This is not intended to be used as a safety product.
- This device does not alert, signal or trigger any kind of response via a panic button or siren.
- This device is intended for non-time critical control and management of data and property.
- Our products and services will require certain input parameters to perform hassle free; including but not limited to an active internet connection and live power supply.
- Users are solely liable for storing and managing the data and information that is stored on the device or via services. We are not responsible for the loss or management of such data.
- Do not touch the device or wires connected to the device during lightning.

Support

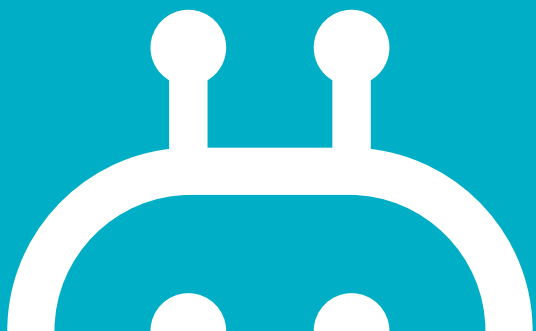
In case you need further help setting up this device:

- Visit the support section on our website (www.quboworld.com) and download the detailed user manual.
- To watch a step-by-step setup guide, visit our YouTube page.
- Contact Qubo Customer Care centre at 1800-572-5757.

Disclaimers:

1. For optimal performance, the device requires a Wi-Fi upload speed of more than 2 Mbps.
2. Hero Electronix Pvt. Ltd. reserves the right to make changes to existing services without prior notice, at its sole discretion.
3. Images used are for reference purpose only. Actual product might vary in terms of colour and composition.
4. All related logos are trademark of Hero Electronix Pvt. Ltd.
5. Certain features may not be available at the time of launch.





Connected Smart Devices from



**Hero
Electronix**

Hero Electronix Pvt Ltd.

503, Rectangle - 1, D-4, Saket District Centre,
New Delhi - 110017

www.quboworld.com

helpdesk@quboworld.com

1800-572-5757

Follow us on



This limited warranty does not cover the following (Collectively Ineligible Products)

- (i) If the warranty seal on the Device is broken.
- (ii) Devices that have been subjected to: (a) modifications, alterations, tampering or improper maintenance and repair (b) handling, storage, installation, testing or use not in accordance with any User guide, Placement guidelines, other instructions provided by HERO Electronix (c) abuse or misuse of the product. (d) breakdown, fluctuations, or interruptions in electrical power or the telecommunication network; or (e) Acts of God, including but not limited to lighting, flood, tornado, earthquake or hurricane.
- (iii) errors and damages caused by: (a) liquid ingress, or spilled food, or physical abuse, or normal wear and tear, (b) use of or being connected to any accessory which was not supplied or authorised by HERO Electronix.
- (iv) Plastic components like front or back covers plus rubber components.
- (v) Physical or cosmetic damage to Silicon cover

Correct disposal of the product

In case you need to dispose of this device at any time in the future, please contact our toll-free helpline. To facilitate effective utilisation of resources, we will arrange the disposal of this device as per the prevailing laws. Please note that electrical products should not be disposed of with household waste.



For all product related complaints/assistance, please contact
Hero Electronix Pvt. Ltd. 503, 5th Floor Rectangle 1,
D-4, Saket District Center, New Delhi - 110017
Email us at: support@quboworld.com | Toll Free - 1800-572-5757

www.quboworld.com

Follow us on   

WARRANTY CARD

Limited Warranty Statement

Qubo
A Hero Group Venture

Thank you for selecting the Qubo Smart Outdoor Camera by Hero Electronix.

NOTE : This is a simplified and concatenated version of the standard warranty terms and conditions. For the complete warranty terms and conditions, please refer to the website link given at the end of the document. Alternatively, you can reach out to our toll free helpline number to know about the same.

Important

Please retain your receipt as proof of purchase.
HERO Electronix Private Limited warrants to the owner of the Qubo Smart Baby, (henceforth referred as Device) that the Device will be free of defects in material and workmanship for a period as mentioned below.

Item	Warranty Period	Scope of Warranty
Camera	1 year from the date of Purchase	This warranty covers only the defects in products arising from manufacturing or faulty workmanship.
Adaptor	6 months from the date of Purchase	
Cable	6 months from the date of Purchase	

During this warranty period, if any defect arises in the Device, HERO Electronix will, at its sole discretion, either (i) repair the device free of cost with either new or refurbished parts, or (ii) replace the Device with a new or refurbished Device that is equivalent to the Device to be replaced. This limited warranty applies to any repair, replacement part or replacement device for the remainder of the original warranty period or for 90 (Ninety) days, whichever period is longer.

This limited warranty is non-transferable.
This limited warranty is only valid in India.

Instructions:

For specific instructions about how to obtain warranty services for your Device, please contact our toll-free helpline. In general, you will need to deliver the Device in either its original packing or in equally protective packing to the address specified by Customer Service. HERO Electronix will bear all the cost of the return shipping to the owner except with respect to any Ineligible Product (defined below), for which owner will have to bear all the cost.